



Never search the Internet for weather data again.

MetWise™ Net produces weather graphics and text data and delivers it via any Internet connection.

With an easy-to-use interface, MetWise Net allows you to create custom weather graphics on the fly—the way you want them.

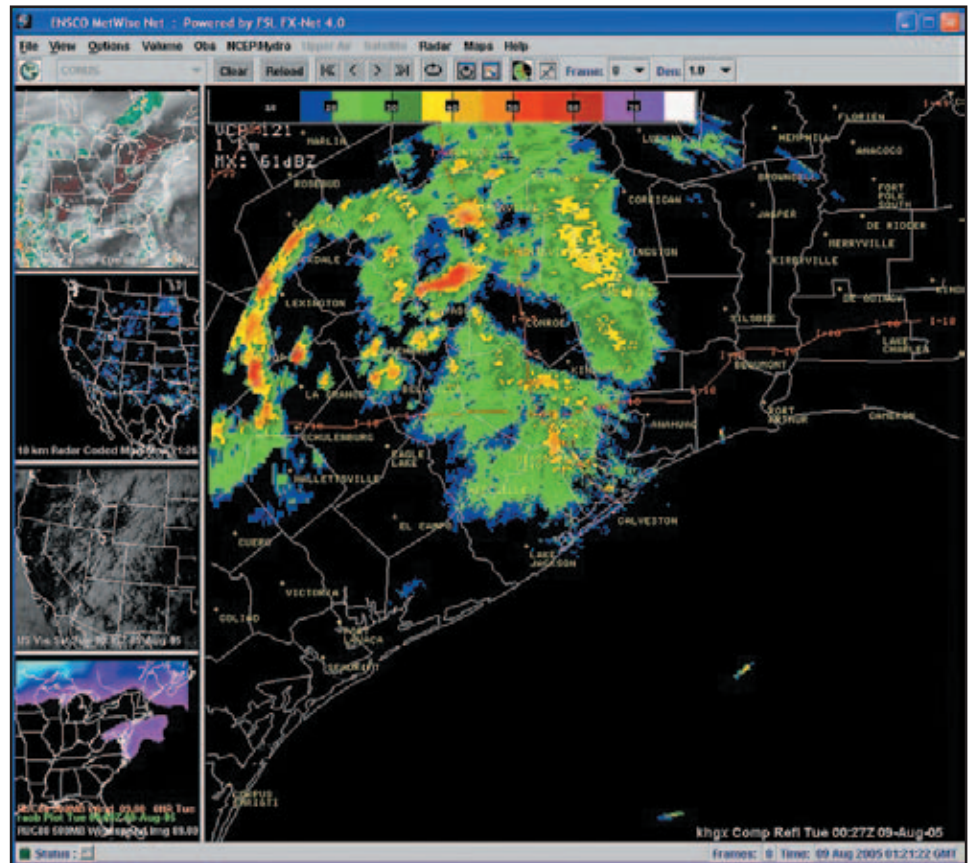
User Interface

The Internet is an important resource for weather information. A standard Web browser provides access to satellite imagery, forecast models, radar and observations but the data is scattered all over the Web. MetWise Net puts all the data and information into one location—the user's computer—with a unique, easy-to-use graphical user interface. The MetWise Net client can load and overlay products of various types and interact with that information.

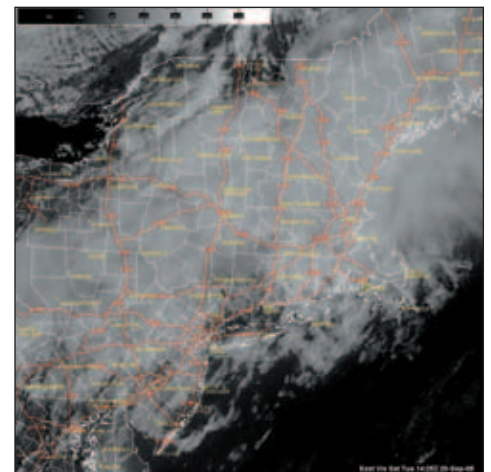
Features

- Domestic and international data and imagery
- Works with PC, Mac and Linux
- Quick swap display windows
- Animation
- User selectable auto product reload
- Zooming
- Macros for quick custom products
- Image fading
- Data density control
- Saving images as GIF or JPG
- Reverse printing (white background)

The MetWise Net interface permits a user to display and rapidly switch between five different product windows. The interface uses standard pull-down menus, a primary graphics window and four product storage windows. Once the user loads a product it can be moved to a storage window with one mouse click for quick retrieval. With minimal effort users



can adjust the system to display customized scales, add supplementary observational data, and display special customer-oriented forecast models in combination with the existing suites of National Weather Service products.



(continued on reverse side)

05.0171



Innovation Starts Here

www.extremeforecasting.com

CORPORATE HEADQUARTERS
3110 Fairview Park Drive, Suite 300
Falls Church, VA 22042-4501
703-321-9000 • 800-ENSCO-VA
info@ensco.com • www.ensco.com

Key Products

- Regional NEXRAD radar mosaics
- Individual radar products from all 141 NEXRAD sites in the continental U.S. including Puerto Rico
- Domestic and international weather prediction models to include
 - RUC, NAM, ETA, GFS, UKMET, ECMWF
- ENSCO high resolution weather prediction model
- Hurricane tracks
- Severe storm watches
- Aviation and marine products
- Hydrological products

How It Works

MetWise Net is a request-based, client-server system operating as an extension of ENSCO's MetWise multi-workstation weather display and analysis system. The ENSCO MetWise server is primarily responsible for time matching of products and for creation and delivery of the product files. The MetWise Net client runs as a Java application on a Windows PC, Mac or Linux. After retrieving user-requested products from the MetWise server via an Internet connection, it allows a user to locally interact with the information. Connections to the server are only maintained during the request and retrieval of products. We are using a wavelet transform to compress model and satellite imagery for optimum delivery speeds—even on a low-bandwidth 56 Kbps modem. The application of this relatively new compression technique is critical to the success of delivering very large-size imagery via the Internet in a reasonable amount of time.

The flexibility of MetWise Net makes it a very popular weather display system for professional meteorologists, researchers, teachers, storm chasers and any weather enthusiast.



What You Need Besides an Internet Connection

Windows Minimum Hardware:

- Screen resolution 1024 x 768
- 512 MB RAM
- Pentium Class II CPU @ 400 MHz
- two-button mouse

Windows Recommended Hardware:

- Screen resolution 1280 x 1024
- 1 GB RAM
- Pentium Class III CPU @ 1 GHz
- three-button mouse

Mac Minimum Hardware/OS:

- G4 or G5 processor
- 512 MB RAM
- Mac OS X
- Mac single-button mouse

Mac Recommended Hardware:

- 1 GB RAM
- three-button mouse (Mac Mighty Mouse)

Linux Minimum Hardware:

- 500 MHz CPU
- 512 MB RAM
- two-button mouse

Linux Recommended Hardware:

- 1 GB RAM
- three-button mouse

For more information, please contact:

Bill Bauman
ENSCO, Inc.
321-853-8202
bauman.bill@ensco.com